

PART NUMBER CONSTRUCTION

D F S N 2 - □ N 1 - N N

Pipe Sizes NPT (female)

- A) ½ inch (pending)
- C) 1 inch
- F) 2 inch (pending)

Output Options

- 1) 4-20 mA, RS 485 (Modbus)
Rate Pulse, Total Pulse

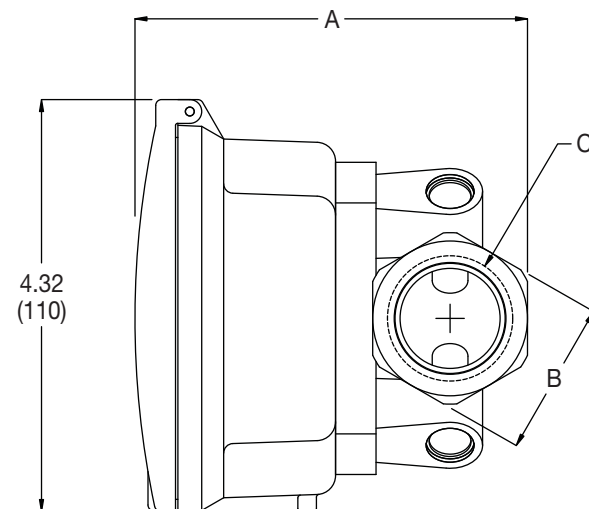
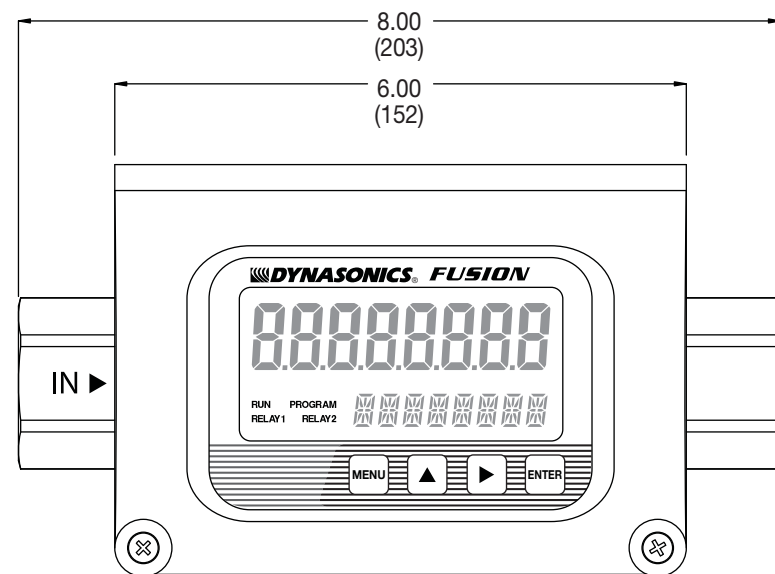
Connector Options

- N) (2) ½ inch NPT Conduit Holes
(1) ¾ inch NPT Conduit Hole

DIMENSIONAL SPECIFICATIONS

MECHANICAL DIMENSIONS:
INCHES (mm)

| METER SIZE | A | B | C |
|------------|------------|---------------|-----------|
| ½" | 3.75 (95) | 1.25 (32) HEX | ½ -14 NPT |
| 1" | 4.12 (105) | 1.62 (41) HEX | 1-11½ NPT |
| 2" | 5.18 (132) | 2.75 (70) HEX | 2-11½ NPT |



HYBRID ULTRASONIC FLOW METER

The Dynasonics Fusion hybrid flow meter was specifically designed for the coal bed methane market where applications are clean, dirty and gassy. The Fusion utilizes both Doppler and transit time ultrasonic sound techniques and automatically selects the correct technology to calculate the flow rate. This dual technology allows the Fusion to accurately measure the volumetric flow of clean, solids-bearing or gaseous liquids on full pipes. Adverse flow conditions – surges, particulate, gas pockets, etc. – will not clog, damage or influence accuracy of the “flow-through” Fusion design. The stainless steel sensor contains no moving parts to wear or degrade, so product maintenance, repairs and calibration intervals are eliminated.

All Fusion meters come completely calibrated and sensors are pre-installed in a spool piece for easy and quick installation into existing piping systems. A simple keypad interface permits measurement unit selection and output spans to be adjusted.



FEATURES

- Water flow meter optimized for CBM well installation
- Automatically switches between Doppler and transit time to determine best technology and calculate accurate flow rates
- Total reset through keypad, RS485 command or momentary contact of a terminal block connection to ground
- Rugged, all metal construction ensures a long service life in harsh outdoor environments
- Modbus command set permits flow rate, total and total reset access
- Class I Division 2 Groups C&D compliant (pending)
- Utilizes flow-through stainless steel flow sensors
- Simultaneous display of flow rate and accumulated total on a large, easy to read LCD display
- Extended flow measuring ranges permit accurate measurements of the high flows at well start-up and dewatering to the lower flow rates at well maturity
- All configuration parameters and flow totals are backed up indefinitely in FLASH memory
- Empty pipe detection – display icon
- Outputs include 4-20mA, RS485 (modbus), rate pulse and total pulse



8635 Washington Ave. ■ Racine, WI 53406-3738 USA
 Tel: 262.639.6770 800.535.3569 North America
 Fax: 262.639.2267 800.732.8354 North America
 www.dynasonics.com

DYNASONICS is a registered trademark of Racine Federated Inc.
 ©2008 Racine Federated Inc., all rights reserved

FORM Fusion 1/08

